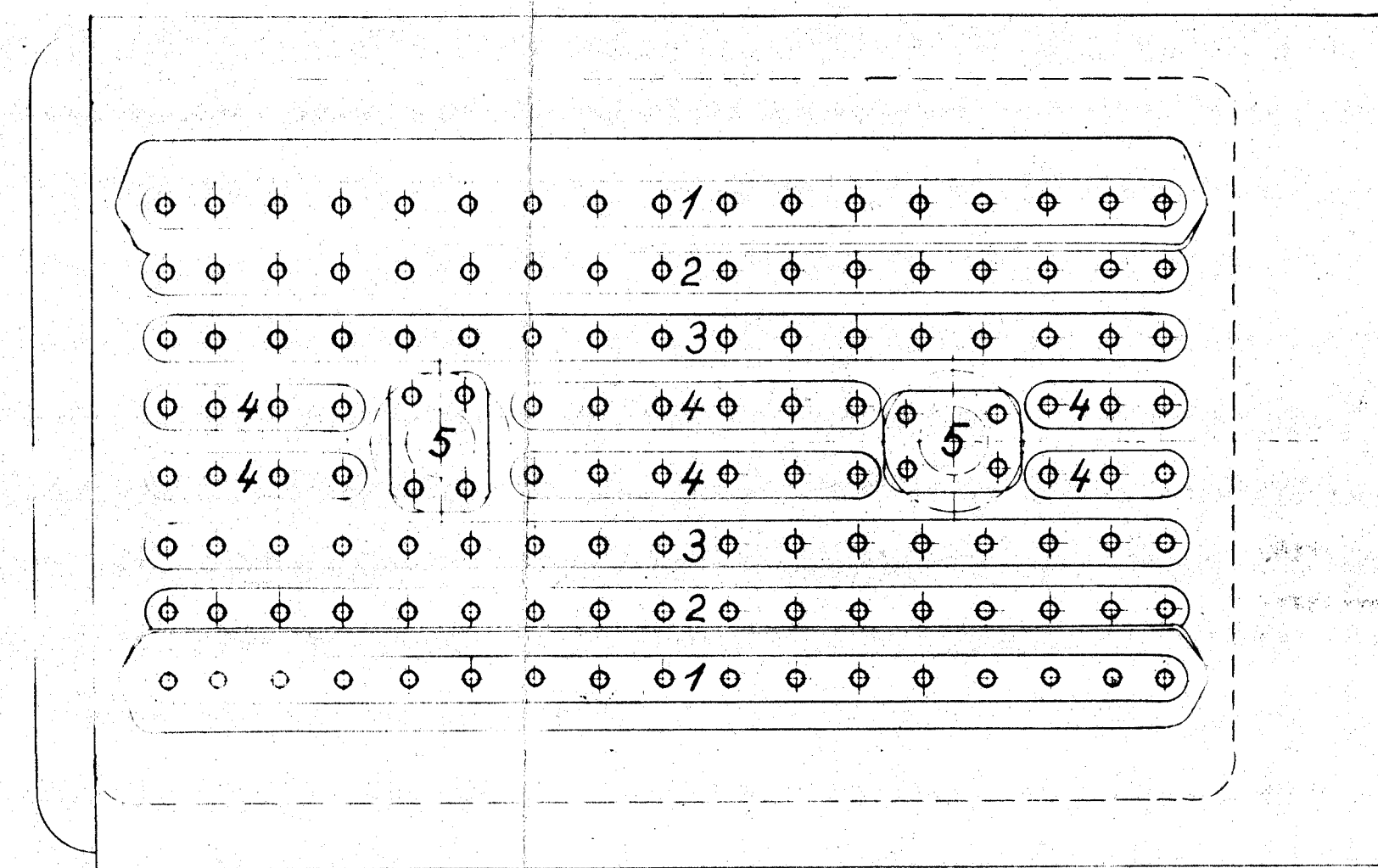
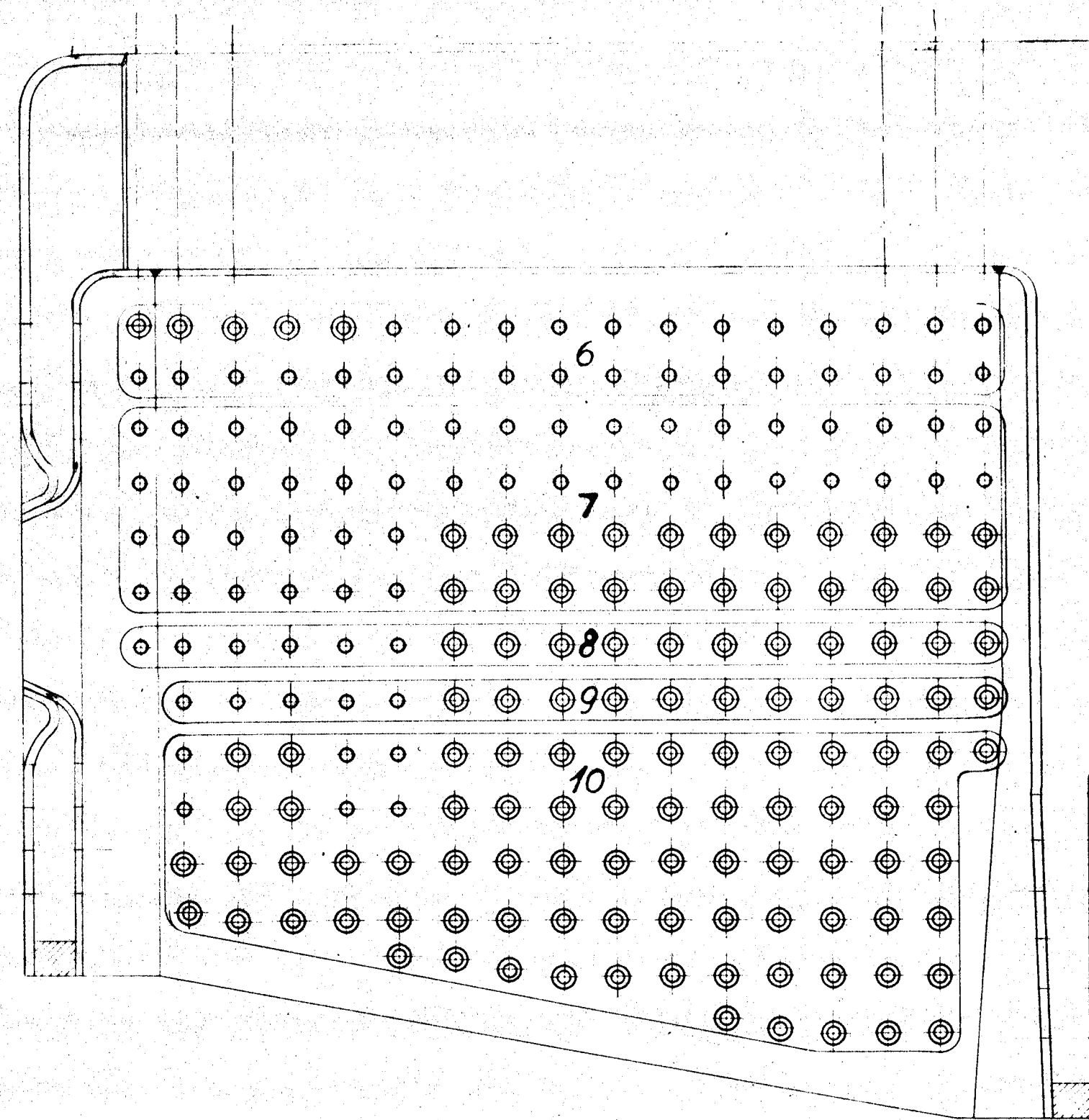
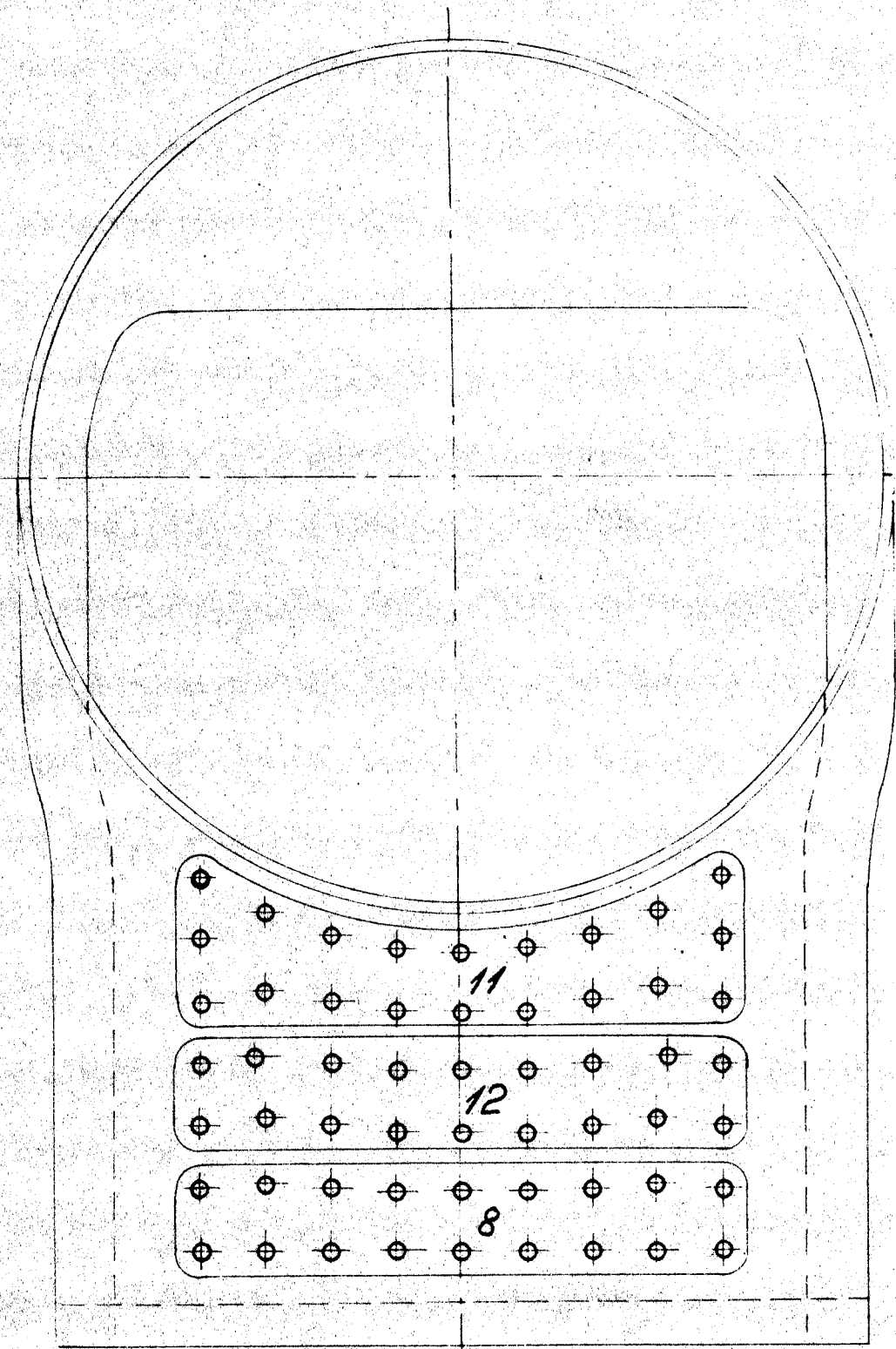
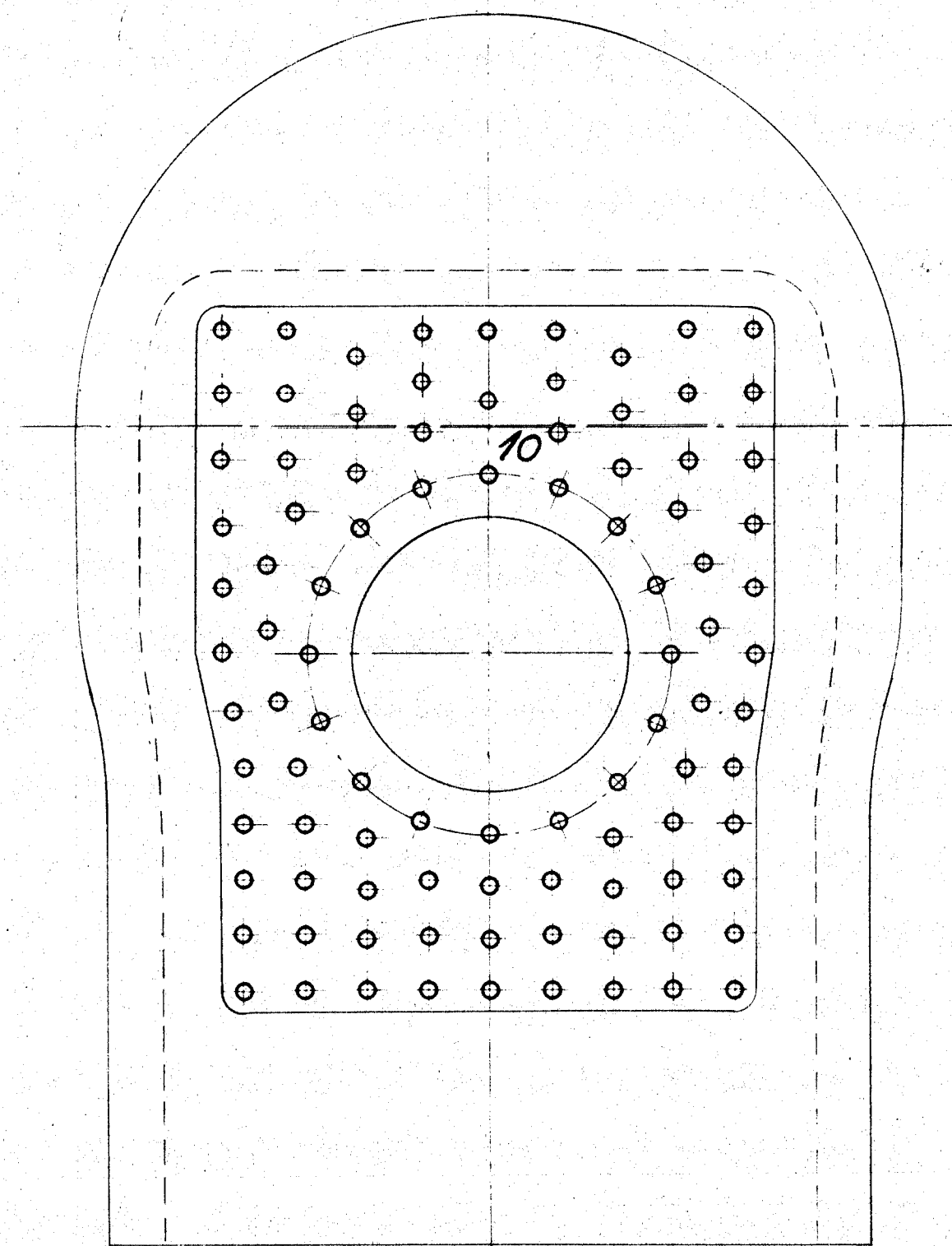
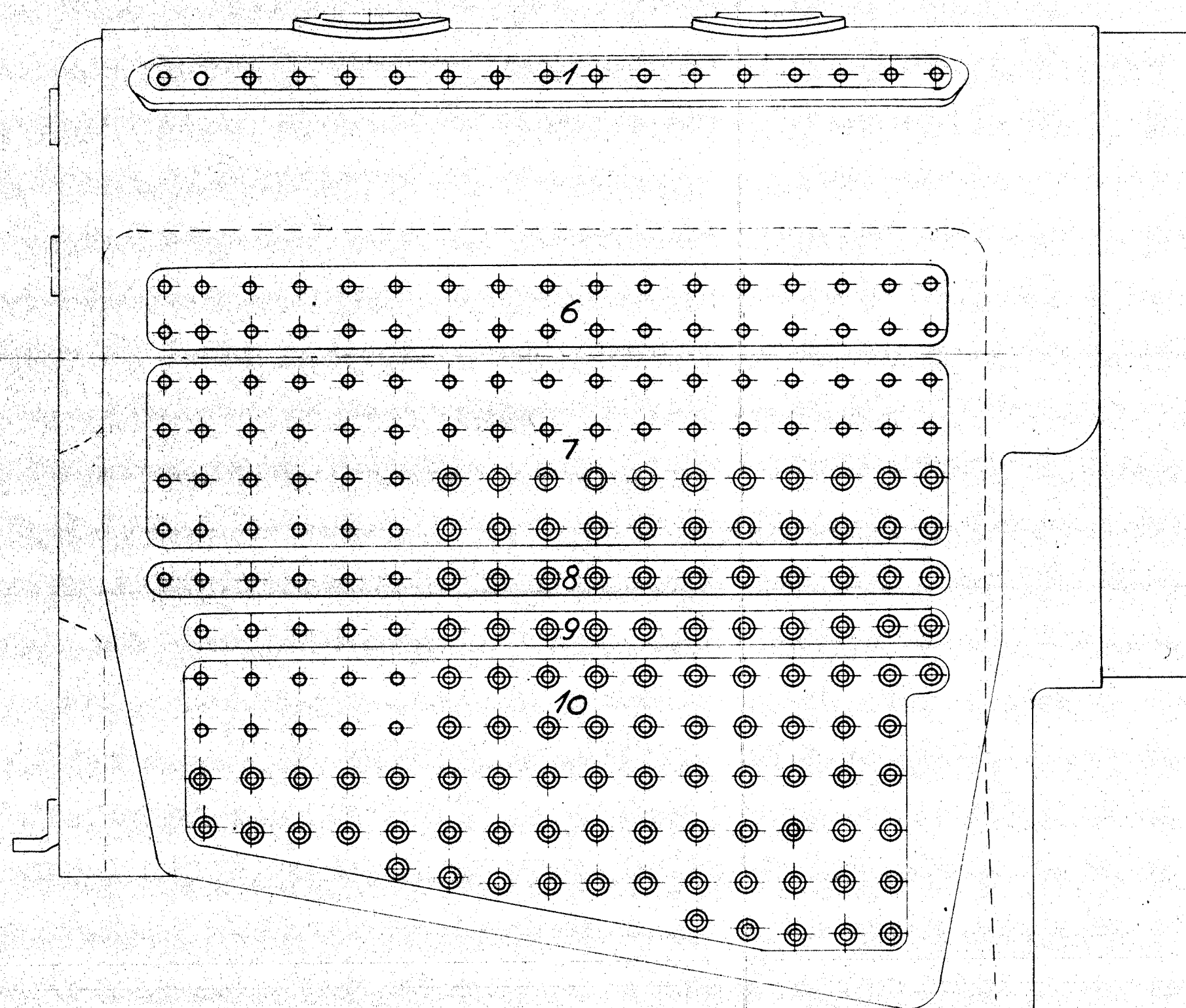


Set ovenfra



De med \oplus mærkede Støttebolte bores helt igennem og proppes tæt udvendig.



For Støttebolte se Tegn. 9L-2.280
Positionnumre henfører til denne

FORMØDINGER					
D. Ændr. for 9L-2.280b.				2/24 J.B.	
a. Antal Foreget		0/24 J.B.			
FRICHS				MALETT. A	J.B.
				KAL	J.B.
1:10				REV	J.B.
				DATE	18-7-41
Anbringelse af Støttebolte D-Tenderloko. Litra. Q				TEGNING NR.	
				9L-2.480	
INDEX				a	b